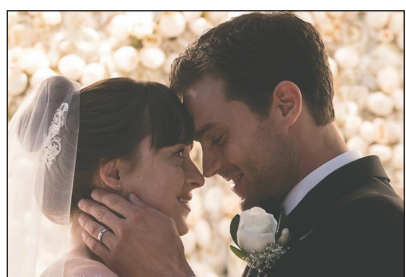


**A struggle**  
Johnson finally 'Freed'  
up for better projects

film/C3



# go!

Go! editor  
Jessica Trondsen  
(509) 661-6388  
go@wenatcheeeworld.com

Section  
**C**

Thursday, February 22, 2018

## A window into the past

Museum hosts People of Our Past dinner theater this weekend



**TOP LEFT:** J. Edward Ferguson, portrayed by Jeff Heminger. **TOP RIGHT:** Belle Culp Reeves, portrayed by Emma Standerford. **BOTTOM LEFT:** Arthur Gunn, portrayed by David Harvill. **BOTTOM RIGHT:** Dora and M.O. Tibbits, portrayed by Megan Kappler and Peter Kappler.

BY JESSICA TRONDSEN  
World staff writer

Travel back to 1905 this Saturday by attending People of Our Past at The Wenatchee Valley Museum & Cultural Center. The four-course historical dinner theater begins at 6 p.m. Short monologues will be performed by local actors associated with Music Theatre of Wenatchee.

Watch as Wenatchee Valley develops through the leadership of community builder Belle Culp Reeves (portrayed by Emma Standerford), town sheriff and theater owner Ed Ferguson (Jeff Heminger), developer Arthur Gunn (David Harvill) and pioneer farmers M.O. and Dora Tibbits (Peter Kappler and Megan Kappler). The show is set in the original Wenatchee Theater, as community members celebrated their involvement in the 1905 Lewis and Clark Centennial Exposition in Portland.

The show is directed by Cynthia Brown. Member tickets are \$35 and non-member tickets are \$40. Tickets are available at [wenatcheevalleymuseum.org](http://wenatcheevalleymuseum.org).

Additional performances will take place by donation at 10 a.m. and 2 p.m. on Saturday and at 2 p.m. on Sunday.

For more information, call the museum at 888-6240 or visit [wenatcheevalleymuseum.org](http://wenatcheevalleymuseum.org).

## Cast of characters

**Ed Ferguson (1879-1959)**  
played by Jeff Heminger

**J. Edward Ferguson** moved to Wenatchee when he was 15. He became Wenatchee's police chief and Chelan County Sheriff. Ferguson also played music, acted in plays and worked with the Chamber of Commerce.

**Belle Culp Reeves (1871-1948)**  
played by Emma Standerford

**Bella Culp Reeves** was appointed hostess for the Chelan County pavilion of the 1905 Lewis and Clark Exposition & World's Fair in Portland, where she was tasked to coordinate railroad shipments of fruit and vegetables. Reeves was a teacher, law clerk and legal reporter before she was elected to the State House of Representatives in 1922. She became Washington's first female Secretary of State in 1938. Her work focused on women's issues, including labor laws and better conditions for incarcerated women.

**Arthur Gunn (1866-1917)**  
played by David Harvill

**Arthur Gunn** moved to Wenatchee in 1892 to manage the first bank in Chelan County, the Columbia Valley Bank. He then built a

real estate business, became manager for the Wenatchee Development Company and the Wenatchee Commercial Club, served as a member of the Columbia River Bridge Committee and as an associate editor of the Wenatchee Advance newspaper. He was tapped to fill a vacant seat for State Senator in 1905.

**M.O. Tibbits (1861-1909)**  
played by Peter Kappler

**M.O. Tibbits** was a pioneer builder of the City of Everett. He engaged in cattle business and orchard development in the Wenatchee Valley, as well as participated in the construction of the Highline and Peshastin irrigation ditches. He was elected Wenatchee Valley Fruit Growers Association president in 1907.

**Dora Tibbits (1861-1942)**  
played by Megan Kappler

**Dora Tibbits**, a Dryden pioneer rancher, wrote about her life in "Reminiscences of a Ranch Woman" and contributed articles for eastern publications. Early irrigation, flooding, fire and widowhood were topics of her writing.

## Check it out

Wenatchee

**Wenatchee Valley Symphony Orchestra presents "Water Music":** 7 p.m. Saturday, Numerica Performing Arts Center, \$18-37, **663-2787**, [numericapac.org](http://numericapac.org).

Experience great rivers and seas during a dynamic performance by the the Wenatchee Valley Symphony Orchestra at 7 p.m. on Saturday at Numerica Performing Arts Center. The program will feature water-inspired works from Smetana, Elgar, Britten and Strauss Jr. Tickets cost \$18 for general admission, \$24 for choice, \$30 for preferred or \$37 for premium seats. For more information or to purchase tickets, call 663-2787 or visit [numericapac.org](http://numericapac.org).

Leavenworth

**"La Bohème - The Met- Live in HD":** 9:30 a.m. Saturday, Icicle Creek Center for the Arts, \$5-22, **548-6347**, [icicle.org](http://icicle.org).

Catch a live high-definition screening of The Metropolitan Opera's production of Puccini's La Bohème at 9:30 a.m. on Saturday at Icicle

Please see CHECK, Page C2

## Wines of the week

Judges awarded these wines a Gold Medal in the 2017 Wenatchee Wine & Food Festival Wine Competition.

**Ginkgo Forest Winery** 2012 Estate Cabernet Sauvignon, Wahluke Slope, \$24

**Judges' comments:** One of the few wineries located on the warm, remote Wahluke Slope, Ginkgo Forest has tasting rooms in Tacoma and Prosser, as well as near Mattawa. This luscious red shows why Cab is king in Washington, with aromas of black currant and blackberry, followed by flavors of plum, apple wood-smoked meat and a hint of cinnamon. The plush mouthfeel gives way to a long, memorable finish. (490 cases; 14.7% alc.)

Mattawa tasting room open 10 a.m. to 5 p.m. Friday and Saturday, 22561 Road T.7 S.W., Mattawa, (509) 932-0082

**Malaga Springs Winery** 2016 Blanc de Noir, Columbia Valley, \$17

**Judges' comments:** This off-dry pink sipper opens with engaging aromas of just-picked strawberries and flavors of Rainier cherries, pink grapefruit and red raspberries. (85 cases; 14.1% alc.)

Tasting room open noon to 5 p.m. Friday through Sunday, 3450 Cathedral Rock Road, Malaga, (509) 679-0152



Photos provided/Rob Spradlin Photography



# Check

From Page C1

Creek Center for the Arts. The four-act opera revolves around a group of artists struggling to survive in Paris' Latin Quarter in the 1830s. Sonya Yoncheva plays Mimi, opposite Michael Fabiano as Rodolfo. The show's estimated run-time is 3 hours and 16 minutes. Advance tickets cost \$22 for general admission, \$12 for students and \$5 for youth 12 and under. At the door, ticket prices increase to \$24 for general admission or \$14 for students. For more information or to purchase tickets, call 548-6347 or visit [icicle.org](http://icicle.org).

## Leavenworth

**Community Film Night, "Cascade Crossroads":** 7 p.m. Tuesday, Icicle Brewing Co., Leavenworth, free, 548-2739.

Icicle Brewing Co. will host a screening of the documentary "Cascade Crossroads" at 7 p.m. on Tuesday. The 30-minute film shines a light on how the I-90 Snoqualmie Pass East Project offers a new model for infrastructure in the wild. The project includes road improvements and a wildlife crossing at the intersection between the roadway and a wildlife migration corridor. After the film, Conservation Northwest coalition members and wildlife biologists will follow up with a Q&A. The screening and Q&A are free to attend. For more information, call 548-2739.



Photo provided

The Atomic Bombshells will perform at Numerica Performing Arts Center on March 3. The show is for ages 18 and up.

## Cashmere

**Sip & Paint Stones:** 6-8 p.m. Feb. 27, Milepost 111, Cashmere, \$35, [sipandpaint.org](http://sipandpaint.org).

Treat yourself to an evening of calm creativity at Milepost 111's Sip and Paint from 6-8 p.m. on Feb. 27. Participants will use acrylic paint to create mandalas on smooth stones from the beaches of Lummi Island. The \$35 fee covers supplies and step-by-step instruction. Aprons will be provided, but participants should dress for painting. For more information or to register visit [sipandpaint.org](http://sipandpaint.org).

## Quincy

**Kids Page Turner's Book Club:** 3 p.m. Feb. 28, Quincy Public Library, 787-2359, [nclrl.org](http://nclrl.org).

Elementary-aged readers are invited to join the Quincy Public Library's Page Turner's Book Club. The club meets monthly in the children's area at the library. If you're interested in joining, call the library at 787-2359 and ask to speak to librarian Dottie.

## Wenatchee

**Shrub-Steppe Poetry Podium:** 4-5 p.m. Feb. 28, Cafe Columbia at Pybus Public Market, free, [sfblair61@gmail.com](mailto:sfblair61@gmail.com).

Immerse yourself in verse at the first Shrub-Steppe Poetry Podium scheduled for 4-5 p.m. on Feb. 28 in Cafe Columbia at Pybus Public Market. Readers can choose to read their own work or favorites from other poets. There are a limited number of reader spots avail-

able, so register as soon as possible. For more information or to register to read, contact Susan Blair at [sfblair61@gmail.com](mailto:sfblair61@gmail.com).

**Science in our Valley series with Alix Whitener of WSU:** 4-5 p.m. Feb. 28, Grove Auditorium at WVC, free, [ncesd.org](http://ncesd.org).

Join WSU doctoral candidate Alix Whitener for a lecture on the behavior and pest management of fruit flies from 4-5 p.m. on Feb. 28 in the Grove Auditorium at Wenatchee Valley College. The seminar is part of the spring "Science in Our Valley" series hosted by the Apple STEM Network, USDA Research Station, NCSERD, WVC and Washington State University. The free lecture



Photo provided

Watch "La Bohème" live from The Met on Saturday at 9:30 a.m. as it is streamed at Icicle Creek Center for the Arts.

is aimed at science enthusiasts, educators, students and researchers. For more information, call 665-2610 or visit [ncesd.org](http://ncesd.org).

## Leavenworth

**Kevin John Scott, "Middle School Hilarity":** 1-3 p.m. March 3, A Book For All Seasons, Leavenworth, free, [abookforallseasons.com](http://abookforallseasons.com).

Middle-grade mystery author Kevin John Scott will meet with fans and sign books from 1-3 p.m. on March 3 at A Book for All Seasons. Scott's debut novel is "Frederik Sandwich and the Earthquake That Couldn't Possibly Be." The goofy tale follows 11-year-old Frederik Sandwich as he tries to unravel the cause of a mysterious rumbling that snaps him awake at night.



Kevin John Scott Author

## Wenatchee

**The Atomic Bombshells:** 7:30 p.m. March 3, Numerica Performing Arts Center, \$27-31, 663-2787, [numericapac.org](http://numericapac.org).

Seattle's internationally celebrated professional burlesque show lands in Wenatchee on March 3. Originally from New Orleans, the performers bring an inspired combination of vintage Bourbon St. striptease with precise choreography and golden age glamour. Advance tickets cost \$27 for adults or \$25 for seniors. On the day of the show, ticket prices increase to \$32 for adults or \$30 for seniors. You must be 18 or older to attend. For more information or to purchase tickets, visit [numericapac.org](http://numericapac.org).

— Lindsay Francis, World staff

# 'Black Panther' is a powerful force at the box office everywhere – including Africa

BY RYAN FAUGHNDER  
Los Angeles Times

Marvel Studios and Ryan Coogler's blockbuster superhero movie "Black Panther" has become a legitimate global juggernaut, grossing a jaw-dropping \$427 million in global ticket sales and defying movie business assumptions. It's also showing strength in the continent where the film mostly takes place — Africa.

Released by Walt Disney Co., "Black Panther" scored the largest box office debuts ever in West Africa and East Africa, generating about \$400,000 and \$300,000, respectively. In South Africa, "Black Panther" had the third-highest opening (\$1.4 million), coming in behind the two most recent "Fast and Furious" movies. Big-screen company Imax Corp. said its theaters in Kenya and Nigeria had their biggest results ever this weekend.

The \$200-million film, starring Chadwick Boseman as the titular comic book hero, is benefiting from its overwhelmingly positive representation of Africa and pan-African cultures, analysts said.

Hollywood movies set in Africa often depict the continent as a war-torn environment filled with poverty and suffering. The film's release also comes less than two months after President Trump was quoted using vulgar language to disparage immigrants from African countries.

"Black Panther" centers on a fictional African nation of Wakanda, which outsiders wrongly believe to be an impoverished country but is a staggeringly wealthy society with the most advanced technology in

the world. "Black Panther," which also features Michael B. Jordan, Lupita Nyong'o and a breakout performance by Letitia Wright, is the first global superhero blockbuster with a mostly black cast and a black director.

"It's a positive representation of Africa, and we normally don't see portrayals like that," said Paul Dergarabedian, senior analyst at box office data firm ComScore. "Black Panther" is so important because it's obliterating these stereotypes."

Disney declined to comment.

To be sure, Africa remains a tiny market for films, compared to other parts of the world, and the African grosses for "Black Panther" are a blip in the movie's overall total, accounting for less than \$3 million in ticket sales for opening weekend. West Africa, a region that includes Nigeria and Ghana, had 32 theaters in 2016, according to data from the National Assn. of Theatre Owners. Major international theater chains lack a presence there.

By contrast, in the United States and Canada alone, "Black Panther" collected about \$202 million in its first three days, representing the second-largest debut ever for a Marvel Studios film. Its massive rollout continued during the Presidents Day holiday, with \$40.2 million in the U.S. and Canada, marking the biggest Monday

result ever, not adjusted for inflation. Domestically, it has grossed \$242 million.

Though small, analysts say there's potential for growth in the African box office, driven by the rising middle class in some African countries. The total number of tickets sold in West Africa in 2017 was projected to grow to 4 million, up 15 percent from 2016, for example, according to National Assn. of Theatre Owners.

One problem is that Hollywood doesn't make many movies that cater to African audiences. "Black

Panther" is a prime exception.

African theater chains — including Lagos, Nigeria-based Filmhouse Cinemas and South African chains Nu Metro Cinemas and Ster-Kinekor Theatres — have been heavily promoting "Black Panther" on their Twitter accounts. As they did in the U.S. and other countries, moviegoers tweeted their enthusiasm before and after attending the screenings. One Twitter user in Pretoria, South Africa, posted a photo of her "Black Panther" ticket with the caption, "I'm ready."

"The movie Black Panther is amazing because it does not play into destructive stereotypes of black people as well as showing richness of African culture," Filmhouse Cinemas wrote on its Twitter page.

Greg Foster, chief executive of Imax Enter-

tainment, said "Black Panther" could help expand the film market in Africa, and elsewhere.

"It's brought in people who traditionally haven't gone to movies, because there's a message in 'Black Panther' that says this is a movie to support," Foster said.

Presented by WHS Drama Club

Directed by Paul Atwood

**MARCH 8 - 10 & 15 - 17**

Evenings 7:30pm Saturday Matinees 2pm

Wenatchee High School Auditorium  
Tickets: \$18 adults, \$15 seniors/students  
Tickets available at the PAC box office or [numericapac.org](http://numericapac.org)

Sponsored by: Cashmere Valley Bank

## WATER MUSIC

FEBRUARY 24, 2018  
7PM, NUMERICA PERFORMING ARTS CENTER

SMETANA  
The Moldau

ELGAR  
Sea Pictures  
Featuring: *Melissa Schiel*, mezzo-soprano

BRITTEN  
Four Sea Interludes  
(Peter Grimes)

STRAUSS, JR.  
On the Beautiful Blue Danube

**TICKETS**  
WenatcheeSymphony.org  
(509) 663-ARTS (2787)  
Numerica PAC  
123 N Wenatchee Avenue

## WENATCHEE VALLEY SYMPHONY ORCHESTRA

2017-18 Partners

PLATINUM

GOLD

**Ye Old Bookshoppe**  
Books, Journals, Candles, Crystals, Gifts & More

**BOOK SIGNING**  
March 2, 5-8 pm  
Tim Patrick

FIND US ON

11 Palouse St. Wenatchee  
[yeoldbooks.com](http://yeoldbooks.com)  
Open Monday - Saturday

## ICICLE CREEK CENTER FOR THE ARTS IN LEAVENWORTH

**OPERA**  
FEB 24  
**LA BOHEME**  
Sponsored by: John and Beckie Peterson, Paul Haase

**FILM**  
FEB 24  
**FLY FISHING FILM TOUR**  
Presented in partnership with the Wenatchee Valley Fly Fishers.

**CONCERT**  
MAR 23  
**CARRIE NEWCOMER CONCERT**

**CONCERT**  
MAR 24  
**CARRIE NEWCOMER WORKSHOP**

**OPERA**  
MAR 31  
**COSI FAN TUTTE**

**REGISTRATION FOR SUMMER CAMPS NOW OPEN!**

TICKETS AND MORE AT [ICICLE.ORG](http://ICICLE.ORG)