

## Prehistoric

'Early Man' is a fun stop-motion film

film/C3



go!

Section

C

Go! editor  
Jessica Trondsen  
(509) 661-6388  
go@wenatcheeworld.com

Thursday, February 15, 2018

# Coming soon to NCW

## Take note of these upcoming events, deadlines and more

BY JESSICA TRONDSEN  
World staff writer

Spring is shaping up to be a busy time in North Central Washington. Mark these events on your calendar in advance so you don't miss out on speakers, performances, submissions, tickets and more. For additional upcoming events, peruse the Planner on Page C4.

### Register now for the 16th Annual Leavenworth Spring Bird Fest

See the birds and enjoy the spring weather with a range of activities during the 16th Annual Leavenworth Spring Bird Fest. Registration opens today for the festival, which runs May 17-20 at Barn Beach Reserve.

The bird fest is an annual event that provides educational and recreational activities about wildlife while promoting awareness of conservation issues.

Volunteer bird guides will lead all skill levels of birders and nature lovers on field trips ranging from gentle walks to off-trail excursions and river rafting. Find more information and register for trips at [leavenworthspringbirdfest.org](http://leavenworthspringbirdfest.org). Art classes, family activities and the Bird Fest art exhibition are other events to check out during the festival hosted by Wenatchee River Institute.

The "Pacific Northwest Birds and their Habitats" art exhibition is currently taking submissions. Artists in Grant, Chelan, Douglas and Okanogan counties are encouraged to apply. Participants must be 18 years or older. Pieces must be received by March 2 and measure 36" x 36" or smaller. Submissions can be sent to [michael@icicle.org](mailto:michael@icicle.org). The exhibit will include 15-20 pieces of art that will be juried and curated by Icicle Creek Center for the Arts, Wenatchee River Institute and a local artist. The pieces will be on display in the Snowy Owl Theater from April 27-May 20. A reception will take place May 17 from 5-7 p.m.

Birder and artist David Allen Sibley will give a keynote speech during the festival at Icicle Center for the Arts. Sibley's presentation will take place May 19 at 7 p.m. Tickets are available at [icicle.org](http://icicle.org) or [leavenworthspringbirdfest.org](http://leavenworthspringbirdfest.org).

### Spend a night on Broadway without leaving Wenatchee

Have a night on the town this Saturday as The Next Step Dance Studio performs A Night of Broadway, Cinema & Television at Numerica Performing Arts Center. There are two performances, including a 1 p.m. matinee and a 6 p.m. evening show. Tickets are available at [numericapac.org](http://numericapac.org) or at the PAC box office. Tickets to the reserved seating show are \$25 for adults and \$20 for students and seniors.

### Learn about medicine bags at the Cashmere Museum

Take the kids to a free workshop at Cashmere Museum on one of the next three Saturdays from 9 a.m.-12 p.m. Participants will learn about the symbols, colors and iconography of the medicine bag during "Medicine Bag Workshop: Meaning, Art and Use" and then make their own Medicine Bag. Afterward, participants will tour the museum.

The medicine bag is a sacred object in Native American traditions.

The workshop is made



Photo provided

Singer-songwriter Mandy Harvey will perform at The Grove Recital Hall on March 1 and at Icicle Creek Center for the Arts on March 3.



World file photo/Mike Bonnicksen

Close up of the bells of alphorns taken during a concert on Front Street in Leavenworth at the 1st annual Northwest Alphorn Workshop. Registration is now open for the May event.

possible through the Community Foundation of NCW and a 2017 Woods Family Music and Arts Grant.

Classes will take place Feb. 17, March 3 and March 17. Each class is limited to 25 students. Reserve a space by calling 782-3230 or emailing [info@cashmeremuseum.org](mailto:info@cashmeremuseum.org).

### Learn watercolor basics in Okanogan

Tina Tharp will teach a course in watercolor basics at the United Presbyterian Church in Okanogan on Feb. 19. The church at 439 W. Oak will open at 9 a.m. for participants who need supplies. The class begins at 10 a.m. Guests are invited to bring a sack lunch and stay longer than the demonstration for additional time to paint. Email Tharp at [tharp49@gmail.com](mailto:tharp49@gmail.com) or Linda Vance at [lindaruthvance@gmail.com](mailto:lindaruthvance@gmail.com) for more information.

### Visit The Grove for Visiting Writers

Listen to a free reading with writers Sharma Shields and Matthew Sullivan on March 1 at 6:30 p.m. The Visiting Writers Winter Reading takes place in The Grove Recital Hall at



Matthew Sullivan  
Author



Sharma Shields  
Author

Wenatchee Valley College. Doors open at 6:15 p.m.

The WVC English department brings the two authors to campus as part of the Community Appreciation Series, which is sponsored by the Wenatchee Valley College Foundation to offer programming to alumni and the public.

Matthew Sullivan is the author of "Midnight at the Bright Ideas Bookstore." He lives in Ephrata and teaches writing and literature at Big Bend Community College in Moses Lake.

Sharma Shields is the author of "The Sasquatch Hunter's Almanac" and "Favorite Monster," a collection of short stories. Her next novel, "The Cassandra," is due to be released in 2019. Shields lives in Spokane and serves on



Photo provided

Nancy Pearl will visit Wenatchee Public Library on March 1.

the board for the Friends of the Spokane County Library District.

### Meet Mandy Harvey

Mandy Harvey is a jazz singer-songwriter with perfect pitch, terrific timing and a hearing impairment that hasn't stifled her musical talent. She won the VSA International Young Soloist Competition in 2011 and has performed at the Kennedy Center in Washington, D.C. Last summer, she was introduced to audiences around the globe during her appearance on "America's Got Talent," where she earned the Golden Buzzer from Simon Cowell at auditions and finished in 4th place.

The inspirational speaker and musician will visit The Grove Recital Hall at Wenatchee Valley College on March 1. The free concert and Q&A begins at 3 p.m. and is open to the public.

Harvey's visit to WVC is sponsored by the college's American Sign Language student group.

Harvey will perform a ticketed concert at Snowy Owl Theater at the Icicle Creek Center for the Arts on March 3 at 7 p.m. Student tickets cost \$22-25 and general admission tickets are \$32-35. Tickets are available for purchase at [icicle.org](http://icicle.org) or at the door. Harvey's performance will conclude a three-day visit to area schools to meet and work with students through the Visiting Artist Series.

### Check out these NCRL events

Branch out this March by attending an author talk at one of the North Central Regional Libraries. Nancy Pearl will visit Wenatchee Public Library on March 7 at 6:30 p.m. David George Gordon will visit numerous locations from March 7-17.

Pearl, a librarian and bestselling author, will be promoting her new fiction book, "George & Lizzie." She

Please see SOON, Page C2

## Check it out



World file photo/Mike Bonnicksen

Josh West of Wenatchee jumps while participating in the third annual Rails & Ales rail jam in 2017. The event on Orondo Ave. between Wenatchee Ave. and Pybus Public Market returns Saturday night with skiing, snowboarding, music and local beer.

### Quincy

**Lil Abner:** 7:30 p.m. Feb. 16-17 and 22-23, 2 p.m. Feb. 24, Quincy High School, \$12, 787-3571.

Quincy Valley Allied Arts' production of "Lil Abner" will kick off Friday at 7:30 p.m. at Quincy High School. The comic strip adaptation originally hit Broadway in 1956. The tale follows Lil Abner Yokum, his sweetheart Daisy May Scragg and their hometown of Dogpatch after it's declared the "most unnecessary town in the U.S." Catch a performance at 7:30 p.m. Friday, Saturday or next week, Feb. 22-23. The final performance is planned for 2 p.m. on Feb. 24. Tickets are \$12 and available at Martin Morris or at the door. For more information, call 787-3571.



Photo provided

The Wine Cellar Grand Opening will take place this Saturday in Leavenworth.

or \$7 for children. If you miss this weekend's shows, the production continues Feb. 16-18, 23-25 and March 2-4. For more information or to purchase tickets, visit [masquers.com](http://masquers.com).

### Leavenworth

**The Wine Cellar Grand Opening:** 2-5 p.m. Saturday, The Wine Cellar, 217 9th St., Leavenworth, free, 888-5713.

Enjoy live music and complimentary wine tastings and appetizers from 2-5 p.m. on Saturday during the grand opening celebration at The Wine Cellar tasting room in Leavenworth. The new tasting room offers premium wines from Basel Cellars, Patterson

Please see CHECK, Page C2

## Wines of the Week

Judges awarded these wines a Gold Medal in the 2017 Wenatchee Wine & Food Festival Wine Competition.

**Succession Wines** 2015 Famiglia Vineyards Cabernet Franc, Ancient Lakes of Columbia Valley, \$39

**Judges' comments:** We don't usually associate the cool Ancient Lakes region around the Columbia Basin town of Quincy with red wines, but fruit from this vineyard is the exception. This Cab Franc is a classic, with notes of Rainier cherries, pencil shavings and hints of sweet herbs followed by flavors of ripe black cherry and ripe plum on the palate. It's all backed by nicely managed tannins that are smooth through the lingering finish. (97 cases; 14.7% alc.)

Tasting room will re-open in May 78 Swartout Road, Manson, (509) 888-7611

**Eagle Creek Winery** 2015 Chardonnay, Columbia Valley, \$22

**Judges' comments:** A delicious Chardonnay from Paul Sharpe, owner/operator/vintner of this Leavenworth winery. Aromas of tropical fruit, including pineapple, mango and banana, along with hints of Golden Delicious apple, all backed by bright, refreshing acidity that gives way to a juicy finish. (125 cases; 13% alc.)

Tasting room open 11 a.m. to 5 p.m., Friday through Sunday, May through October

10037 Eagle Creek Road, Leavenworth, (509) 548-7668

The d'Vinery tasting room is open 11 a.m. to 6 p.m. Sunday and Monday; noon to 6 p.m. Tuesday through Thursday; noon to 7 p.m. Friday and Saturday 617-4A Front Street, Leavenworth, (509) 548-7059



# Check

From Page C1

Cellars, Isenhower Cellars, Napeequa Vintners, Obelisco Estates and Sigillo Cellars. A prize drawing will be held at 5:30 p.m. and participants must be present to win. For more information, contact Sigillo Cellars at 888-5713.

## Wenatchee

**Rails & Ales:** 5:30 p.m. Saturday, downtown Wenatchee, free, [missionridge.com/events/rails-ales](http://missionridge.com/events/rails-ales).

Mission Ridge, Badger Mountain Brewery and Numerica Credit Union will bring the mountain to Orondo Avenue in downtown Wenatchee during the annual Rails & Ales event on Saturday. The evening will open at 5:30 p.m. with some of the state's best skiers and snowboarders competing in a rail jam competition. Badger Mountain Brewery will host an outdoor craft beer garden during the event featuring



Photo provided

Harpist Catherine Case and flutist Jennifer Rhyne will perform Saturday during "Nature and Music" at Canyon Wren Recital Hall.

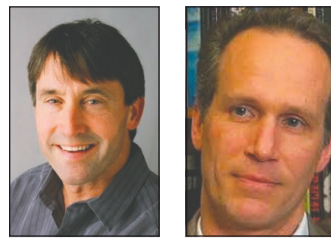
local brews. The free event is family friendly, with only the beer garden and after party in the brewery restricted to 21+. For more information, visit [missionridge.com/events/rails-ales](http://missionridge.com/events/rails-ales).

## Leavenworth

**Nature and Music:** 7 p.m. Saturday, Canyon Wren Recital Hall, Icicle Creek Center for the Arts, \$12-24, [548-6347](http://icicle.org), [icicle.org](http://icicle.org).

Harpist Catherine Case

and flutist Jennifer Rhyne are featured musicians at the nature inspired "Nature and Music" program Saturday at Canyon Wren Recital Hall at Icicle Creek Center for the Arts. The classical program will also include Ned Rorem, George Frederick McKay, Charles Rochester Young, Toru Takemitsu, Matthew James Briggs and Vincent Persichetti. Advance tickets cost \$22 for general



**Nick O'Connell** **Bill Kenower** admission or \$12 for students. At the door, tickets will run \$24 for general admission or \$14 for students. For more information or to purchase tickets, visit [icicle.org](http://icicle.org).

**Bill Kenower and Nick O'Connell:** 6:30 p.m. Feb. 23, Leavenworth Public Library, free, [548-1451](http://548-1451), [abookforallseasons.com](http://abookforallseasons.com); **Write on the River Winter Workshop:** 9 a.m.-4 p.m., Feb. 24, Wenatchee Valley College, \$45-60, [writeontheriver.org](http://writeontheriver.org).

Stop in for a fun Q&A session with authors Bill Kenower and Nick O'Connell at 6:30 p.m. on Friday at the Leavenworth Public Library. Kenower is the author of writerly advice tomes "Fearless Writing" and "Write Within Yourself." For more information on Kenower, visit his website at [williamkenower.com](http://williamkenower.com). O'Connell specializes in novels and non-fiction explor-

ing the outdoors. O'Connell's recent releases include "The Storms of Denali" and "Beyond Risk." For more information on O'Connell, visit [nickoconnell.net](http://nickoconnell.net). The event is free and open to the public.

Then on Saturday, attend the Write on The River Winter Workshop with the two authors. The event takes place 9 a.m.-4 p.m. at Wenatchee

Valley College's Wenatchi Hall. Kenower will present on the topic of "Fearless Writing" in the morning, followed by a presentation by O'Connell on "The Hero's Journey: Writing a Quest Narrative." The workshop is \$45 for WOTR members and \$60 for non-members. Find more information at [writeontheriver.org](http://writeontheriver.org).

— Lindsay Francis, World staff



Photo provided

Author David George Gordon will visit several libraries in March to speak on folklore, testimonies and evidence of Bigfoot in the Northwest.

# Soon

From Page C1

will sign copies of the story, which is about an imperfect marriage. Pearl is a frequent NPR contributor on books and will share recommendations of other new books and authors to read.

Gordon is the author of "The Sasquatch Seeker's Field Manual." The northwest naturalist will present an hour-long program about Sasquatch, including evidence and folklore around Bigfoot. His library stops include:

- ◆ **March 7:** Okanogan Public Library, 3:30 p.m.; Omak Public Library, 6:30 p.m.
  - ◆ **March 8:** Grand Coulee Public Library, 6:30 p.m.
  - ◆ **March 9:** Pateros Public Library, 3 p.m.
  - ◆ **March 10:** Soap Lake Public Library, 12:30 p.m.
  - ◆ **March 12:** Royal City Public Library, 6 p.m.
  - ◆ **March 13:** Chelan Public Library, 7 p.m.
  - ◆ **March 14:** Waterville Public Library, 3 p.m.; Wenatchee Public Library, 6:30 p.m.
  - ◆ **March 15:** Cashmere Public Library, 6:30 p.m.
  - ◆ **March 16:** Tonasket Public Library, 2 p.m.
  - ◆ **March 17:** Oroville Public Library, 2 p.m.; Republic Public Library, 5 p.m.
- Gordon's stops come as part

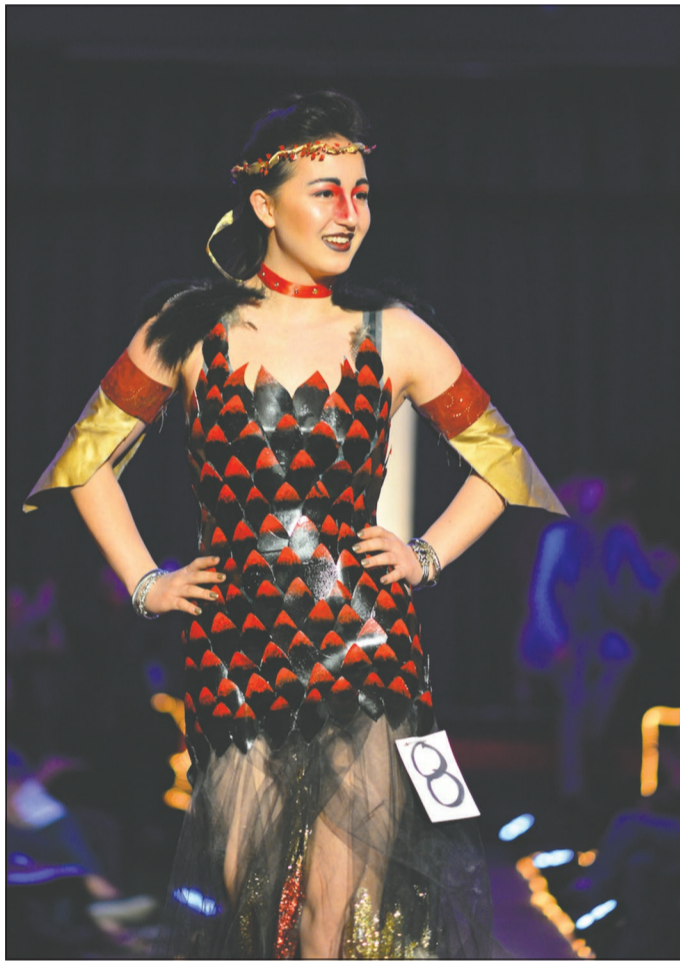


Photo provided

Registration is open to compete as a designer in the Confluence Gallery and Art Center's 8th Annual Trashion Show.

of the Humanities Washington Speakers Bureau, which offers free lectures in partnership with a range of organizations to reach as many audiences as possible.

## Student Writing Competition open

Chelan and Douglas County high school students, this competition is for you. Those in grades 9-12, including Running Start, are eligible to win \$100 in the Write on The River 7th Annual High School Competition. Students are asked to submit 1,000 words of short fiction for the contest. Entries are due March 31 and winners will be announced by April 22. There is no entry

fee for participants. Find more information and fill out a submission form online at [writeontheriver.org](http://writeontheriver.org).

## Register for the 2018 Northwest Alphorn Workshop

Spend a weekend in Leavenworth learning or mastering the alphorn this May. The 2nd Annual Northwest Alphorn Workshop is now accepting applications.

The workshop will run May 25-27 at the Icicle Village Resort. Group seminars for all skill levels, an evening virtuoso concert and a Sunday recital at the gazebo are included in the retreat. The workshop is sponsored

by Leavenworth Alphorns with funding from Projekt Bayern. For more information or to register, contact Thomas Tilton at [alpenfork@frontier.com](mailto:alpenfork@frontier.com) or 548-3494.

## Create Trashion treasures

Give garbage new life by designing wearable pieces for the Confluence Art Gallery and Art Center 8th Annual Trashion Show. Registration forms are available at the gallery and online at [confluencegallery.com/events/trashion-show](http://confluencegallery.com/events/trashion-show). Designers must register by April 20. There is a \$20 entry fee for adults and a \$10 entry fee for student designers.

Upcycled creations will be modeled during a runway show featuring DJ Bullfrog on May 5 at the Methow Valley Community Center in Twisp. Designers will have the chance to win in a variety of categories, including grand prize, People's Choice, 2nd place, 3rd place, Most Recycled, 50+ and Youth. Models will have a chance to win the Strut Your Stuff award for stage presence. The trashion show is for ages 13 and older. A dance party will follow the event.

Contact [salyna@confluencegallery.com](mailto:salyna@confluencegallery.com) for more information. Tickets are available at 997-2787.

Submit upcoming events to [go@wenatcheevalley.com](mailto:go@wenatcheevalley.com).

# WATER MUSIC

## FEBRUARY 24, 2018

### 7PM, NUMERICA PERFORMING ARTS CENTER

SMETANA  
The Moldau

ELGAR  
Sea Pictures  
Featuring: *Melissa Schiel*,  
mezzo-soprano

BRITTEN  
Four Sea Interludes  
(Peter Grimes)

STRAUSS, JR.  
On the Beautiful Blue Danube



## TICKETS

- WenatcheeSymphony.org
- (509) 663-ARTS (2787)
- Numerica PAC
- 123 N Wenatchee Avenue

# WENATCHEE VALLEY SYMPHONY ORCHESTRA

## 2017-18 Partners



Wenatchee history comes to life in an exciting living history performance

# PEOPLE of Our PAST

This year's historical figures are:



**Belle Culp Reeves**  
Community Builder  
Played by Emma Standerford



**Ed Ferguson**  
Town Sheriff and Theater Owner  
Played by Jeff Heminger



**Arthur Gunn**  
Developer  
Played by David Harvill



**Dora and M.O. Tibbits**  
Pioneer Farmers  
Played by Megan Kappler and Peter Kappler

Photographs by Rob Spradlin Photography

## Saturday, February 24 at 6:00 PM

A unique dinner theater performance that includes a historically themed four-course menu.

Tickets are \$35 for members & \$40 for non-members

There are also other performances by donation:

**Saturday, February 24 at 10:00 AM and 2:00 PM**

**Sunday, February 25 at 2:00 PM**

## Wenatchee Valley Museum & Cultural Center

127 South Mission Street  
Wenatchee  
888-6240 • [wenatcheevalleymuseum.org](http://wenatcheevalleymuseum.org)



# ICICLE CREEK

CENTER FOR THE ARTS IN LEAVENWORTH

**FILM**  
FEB 16  
**LOVING VINCENT**  
Presented in partnership with the Grünwald Guild

**CONCERT**  
MAR 3  
**MANDY HARVEY**

**OPERA**  
MAR 10  
**SEMIRAMIDE**

**CLASSICAL**  
FEB 17  
**NATURE & MUSIC**  
Sponsored by: Mimi and Chris Stahler, Ken Hunnicutt

**FILM**  
MAR 16-17  
**VOX DOCS**  
**FILM FESTIVAL**

**CONCERT** **VISITING ARTIST**  
MAR 23-24  
**CARRIE**  
**NEWCOMER**

**OPERA**  
FEB 24  
**LA BOHEME**  
Sponsored by: John and Beckie Peterson, Paul Haase

**FILM**  
FEB 24  
**FLY FISHING**  
**FILM TOUR**  
Presented in partnership with the Wenatchee Valley Fly Fishers.

**REGISTRATION FOR SUMMER CAMPS NOW OPEN!**

TICKETS AND MORE AT  
**ICICLE.ORG**